

URBAN CAMPUS



> > **SITE GOALS**

> *Create a campus of activity*

> *Plan for the people already on the site*

students, visitors, high tech workers, low income residents...

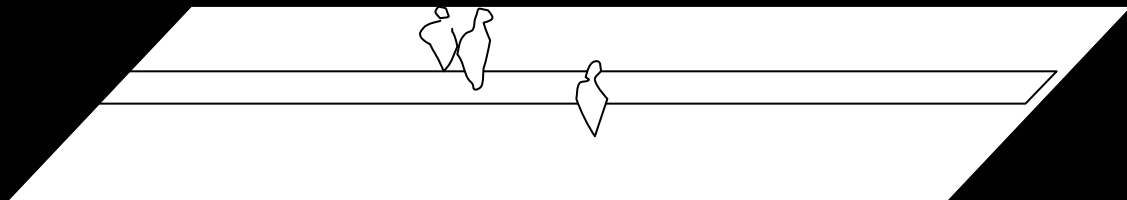
> *Work contextually with the site*

- > Maintain a rich mix of users and activities
- > Provide for a variety of spatial experiences
- > Reinforce the use of the corridor as a linear open space
- > Create frequent connections across the site and into the surrounding neighborhoods

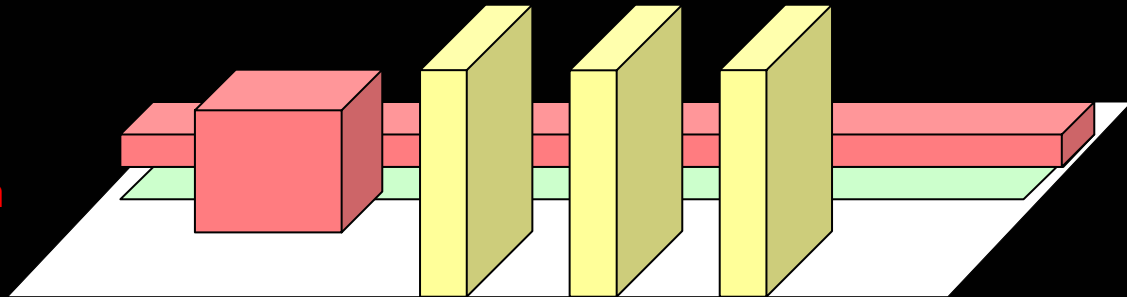
> Maintain a rich mix of users and activities

Design Layers

Human Activities



Facility Construction



Land Use



Land Use Types

Item	Sub-Item	Attitude	Score
Residential	Luxury	→	0
	Ordinary	↑	2
	Simple	↑	2
Commercial and Public Facilities	Administrative & business		1
	Hotels		1
	Commercial		1
	Culture & Recreational	↑	2
	Gymnastic		1
	Hospital & Clinics		1
	Education		1
	Cultural & Historic Relics	↑	2
	Industry, Manufacturing		
Warehouse		↓	-2
Transportation (External)		↓	-2
Road, Street and Square	Road & Street		1
	Square		1
	Parking Lots (Gound)	↓	-2
	Parking Lots (Undergound)		1
Green Space		↑	2
Total Score			12

- ↑ Encourage
- Partly Encourage
- Keep Unchanged
- Partly Discourage
- ↓ Discourage



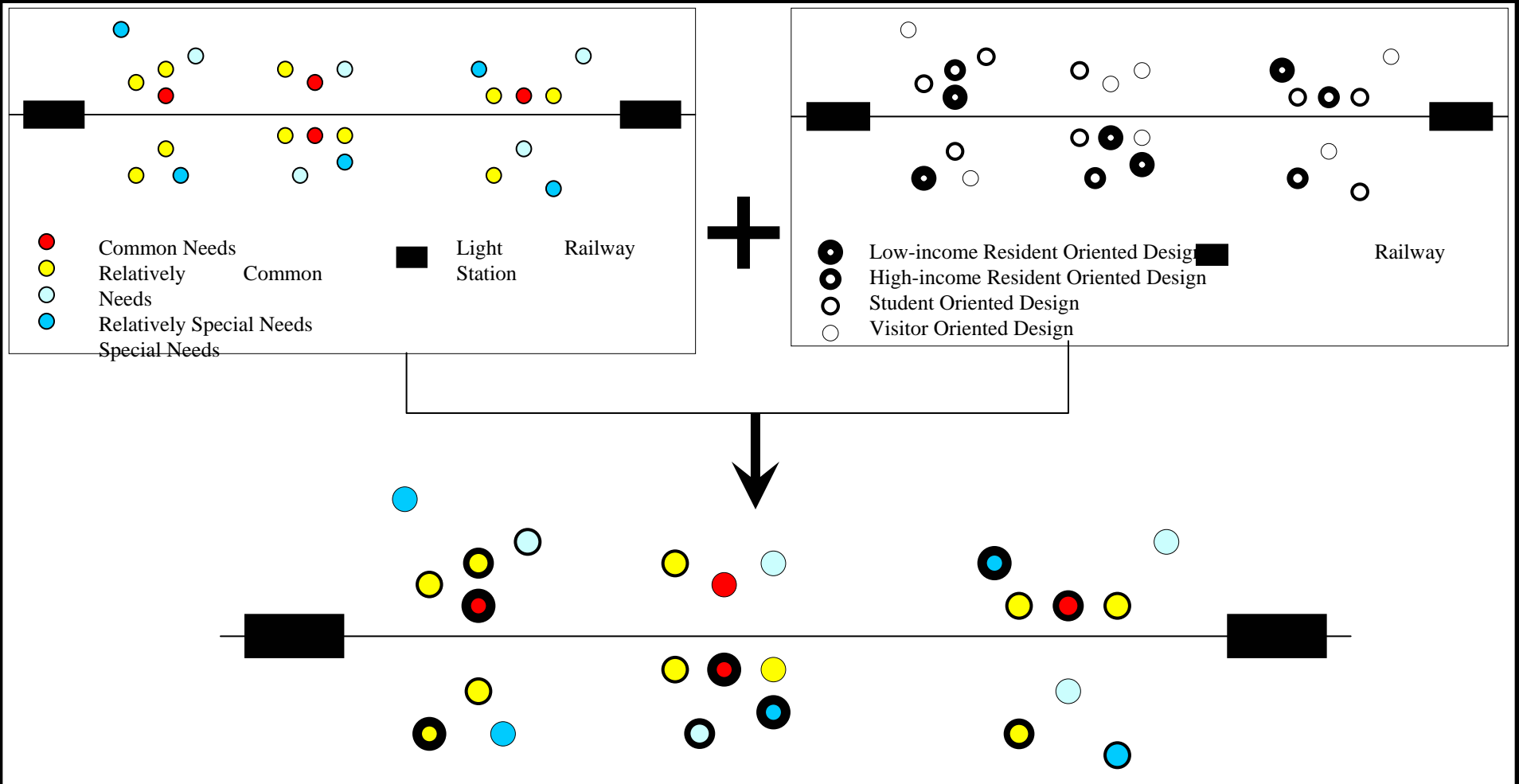
Facility Types

Index	Sub-Index	High-income Residents	Low-income Residents	Students	Visitors
Living	Expensive Apartment	•			
	Cheap Apartment		•	•	
	Expensive Hotel	•			•
	Cheap Hotel			•	•
Working	Expensive Office	•			
	Cheap Office			•	
Food	Expensive Restaurant	•			•
	Cheap Restaurant		•	•	•
Shopping	Expensive Retail	•			
	Cheap Retail	•	•	•	•
	Shopping Mall	•		•	
Study & Research	Book Store	•		•	•
	Library	•		•	
	Exhibition Hall	•		•	•
	Art Gallery	•		•	•
	Laboratory			•	
Recreation	Open Space	•	•	•	•
	Tea House		•	•	•
	Café	•		•	•
	Bar	•		•	•
	Disco	•		•	•
Transportation	Bicycle Parking		•	•	•
	Automobile Parking	•		•	•

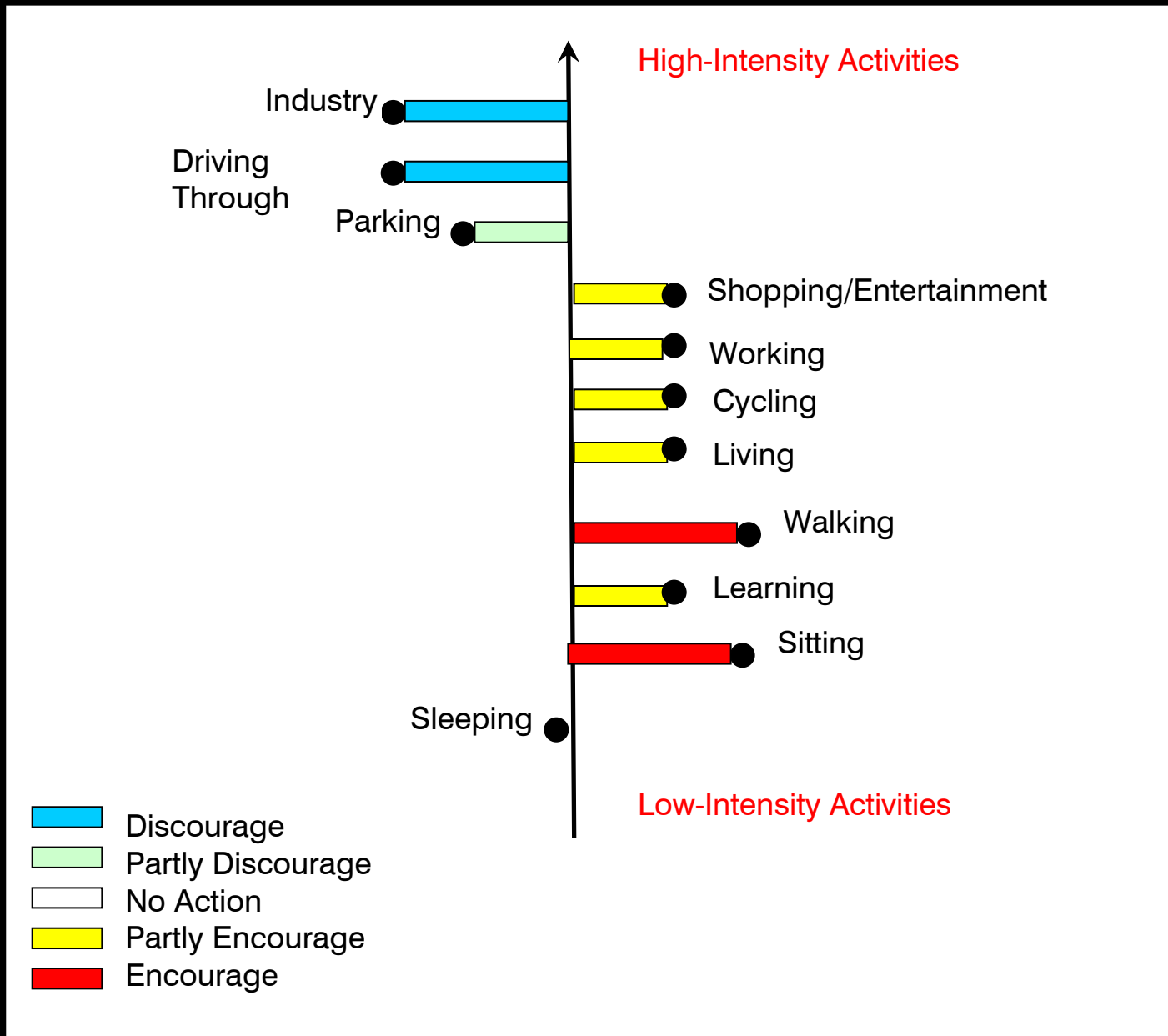
• Common Needs
• Special Needs

• Relatively Common Needs
• Relatively Special Needs

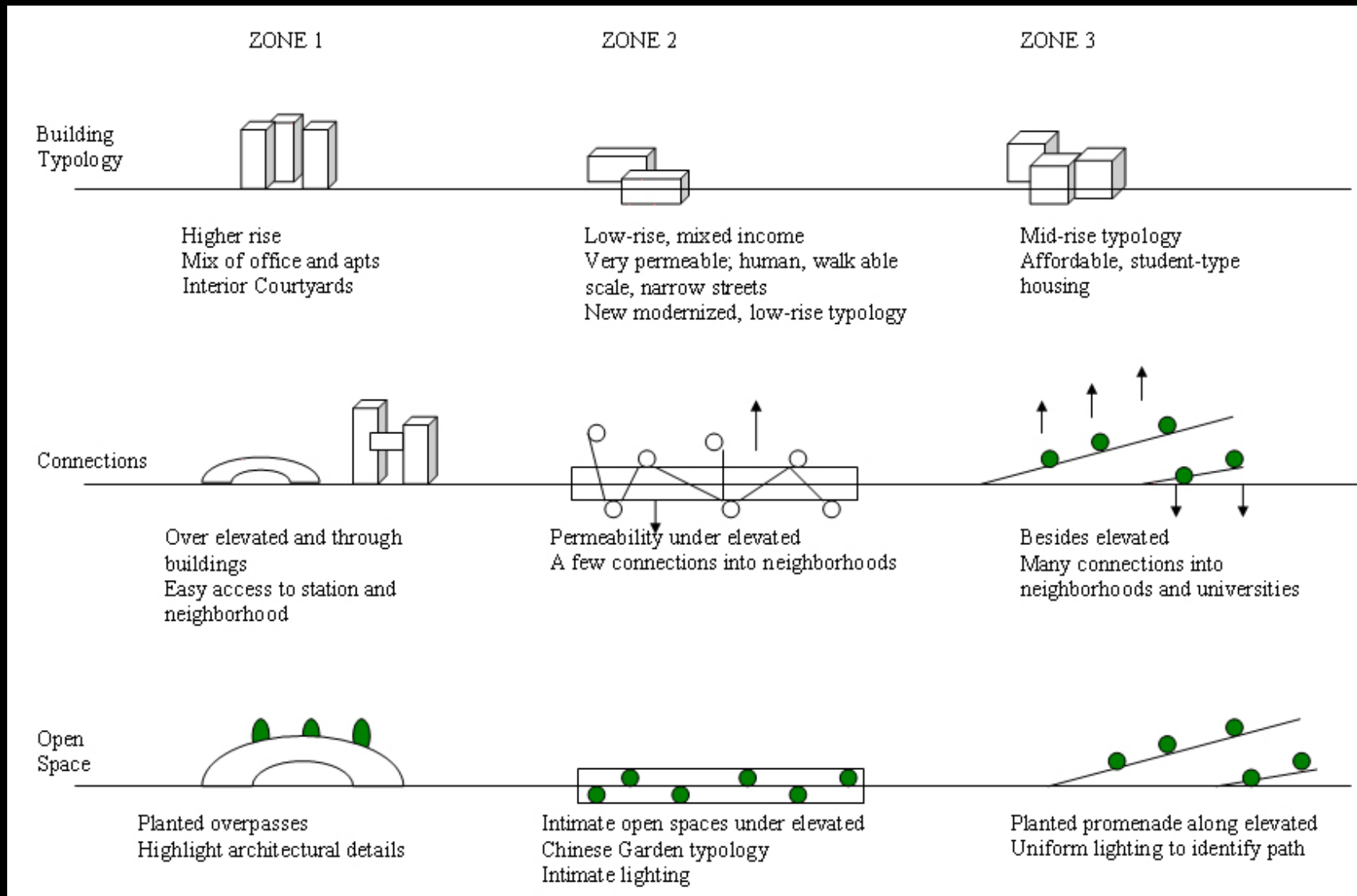
Integration of People's Current Needs and Our Attitude through Design



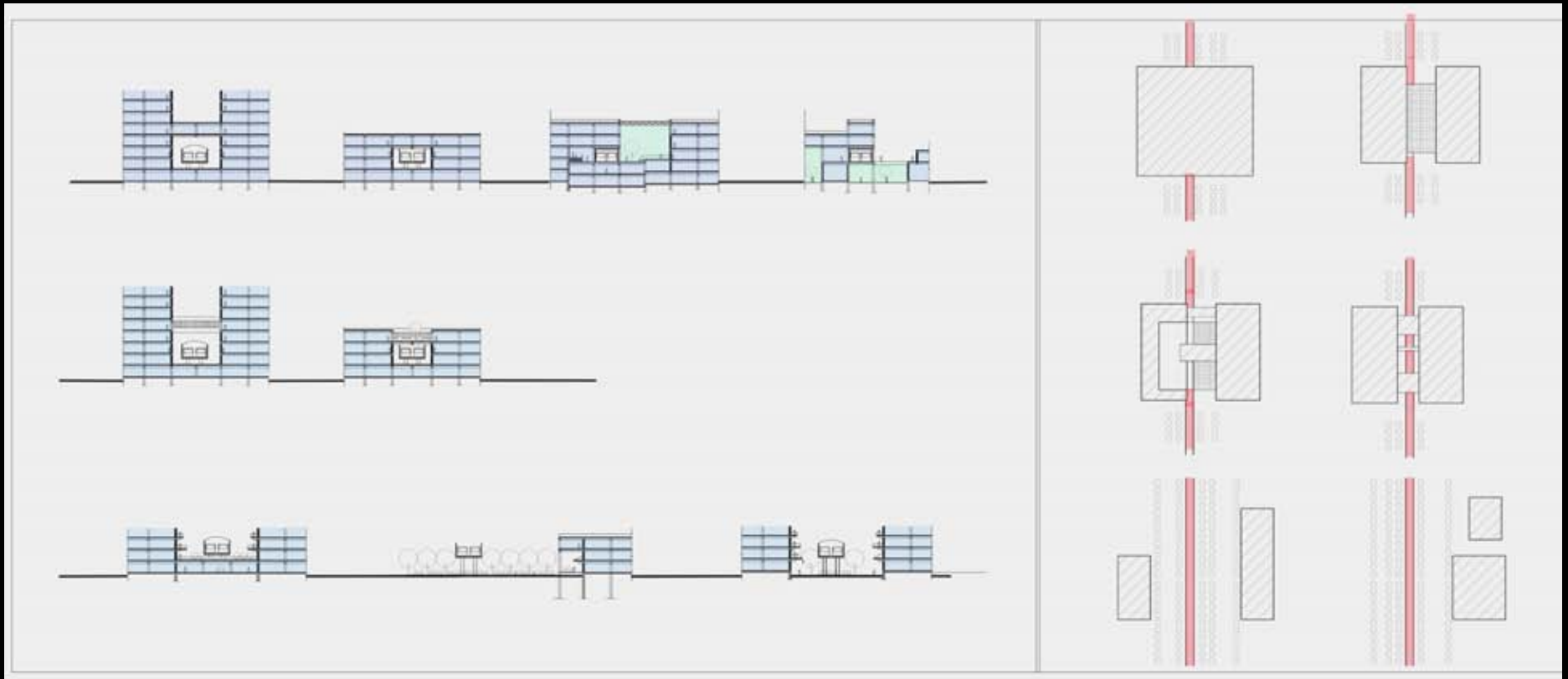
Activity Types



> Provide for a variety of spatial experiences



Intersections with the light rail





> Reinforce the use of the corridor as a linear open space



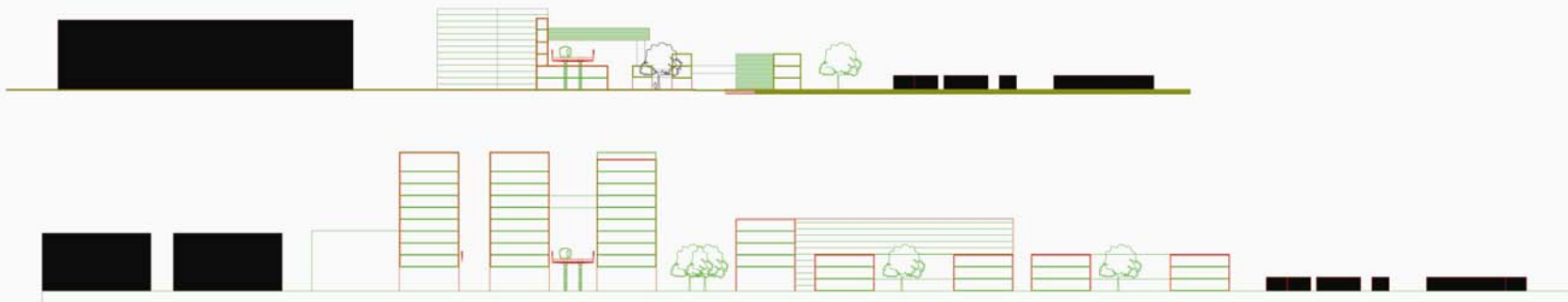
> Create frequent connections across the site and into the surrounding neighborhoods



Illustrative Plan



Diagrammatic Sections



Project Specifics

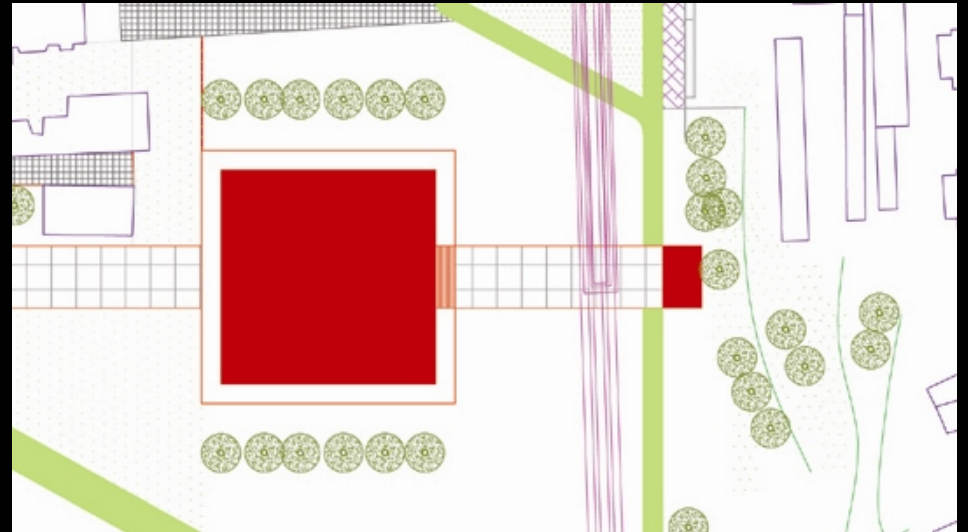
Entertainment Complex

- Builds on the existing entertainment opportunities in this area and begins to create a district for nightlife
- Strategic location near Wudaokou Station makes the complex easily accessible to visitors as well as students living nearby



Exhibition Space

- Provides a space for universities or lab users to display current work
- Creates a landmark to draw people from universities and apartment complexes to the north down the corridor and across the highway overpass



New Laboratory Space

- **Located in an area that was historically used for laboratory purposes**
- **Conveniently adjacent to Tsinghua University and the growing High Technology cluster in Haidian**
- **Flexible space can be used by students, professionals or start-up biotech companies**



Housing

- **Smaller scale attempts to fit in with the low-rise character of this area**
- **Mixed income housing development ensures that both high tech workers as well as the lower income residents who provide services for them will be accommodated**



High Tech Office Complex

- **Develops mixed-use building clusters to allow for a mix of office, hotel and residential uses**

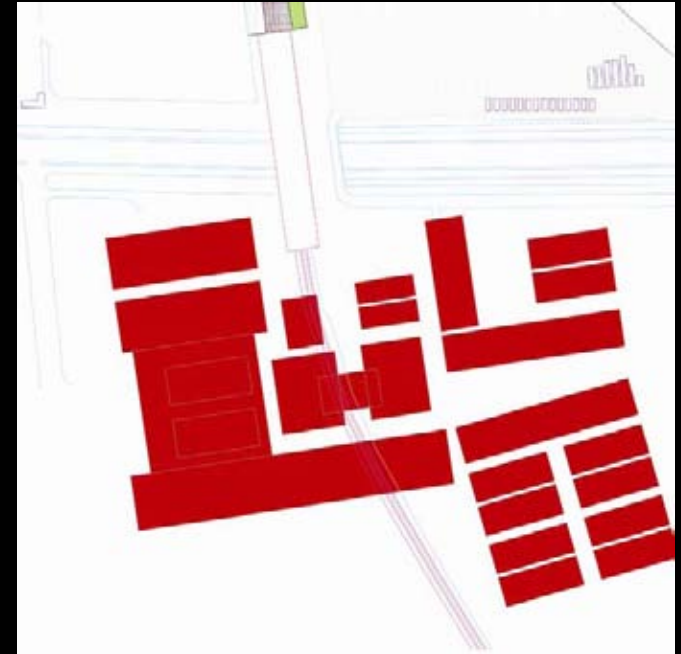
- will ensure a lively, 24 hour a day district
- synergies between uses will be created
- buildings will be easier to reuse

- **Hugs the elevated structure and creates public sky gardens**

- provides an exciting experience for light rail users and visitors to the elevated open spaces
- creates a gateway to the Haidian district and a landmark for the city

- **Allows for connections between buildings and directly from the light rail station**

- serves as an amenity and status symbol for high tech companies and hotels
- will help stem the flow of automobile traffic to the area



Market/Library Triangle

- A mix of institutional and retail uses at a key intersection of our site attempts to bridge the east and west sides of the light rail and bring together the students from the surrounding universities, high tech workers and area residents of all income classes
- We locate a new library under the light rail with extensions to the east and west, and imagine creating many auxiliary uses in association with this such as book markets and stores, cafes, and publishing houses.
- We also include around a large plaza, spaces for vendors, artist lofts and exhibition space in order to encourage the creation of a dynamic and interesting public space.
- A new mall development directly to the east could serve as a larger retail anchor for other small shops and markets.



Images



