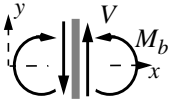
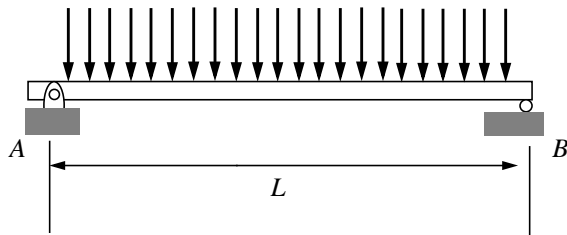

Quiz #1 - Time Trial**1.050 Solid Mechanics****Fall 2004***You have 15 minutes.*

A “simply supported” (weightless) beam, of length L , carries a uniformly distributed load, w_0 , <force/length>. Sketch the shear force and bending-moment diagrams for this system. Where does the maximum bending moment occur? What is its magnitude?

Adopt the convention shown for positive shear force and bending moment.

 w_0  $M_b|_{\max} =$